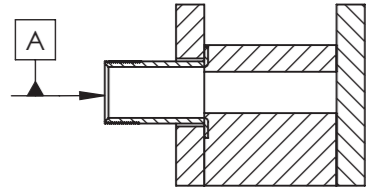
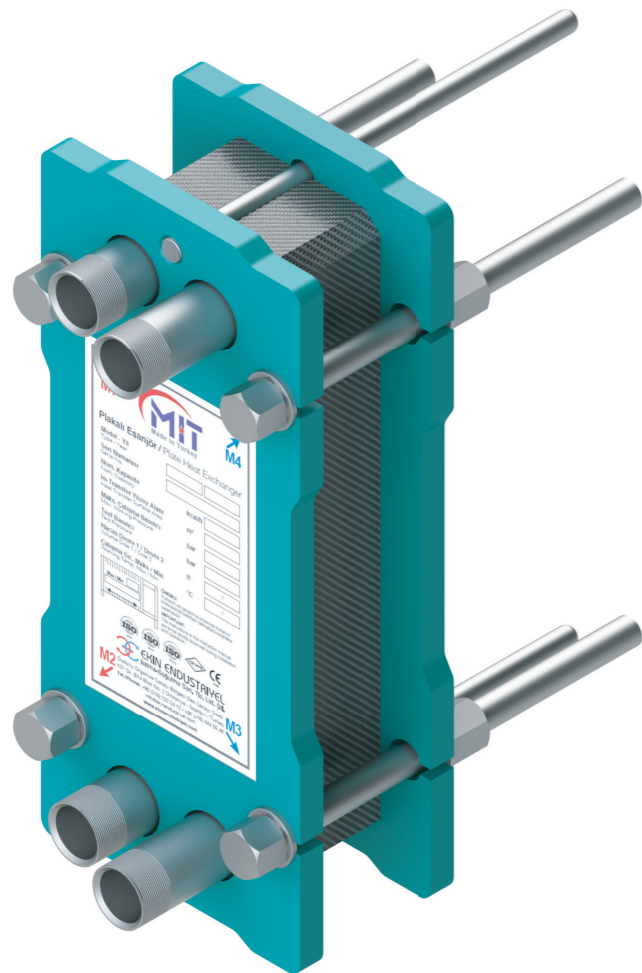
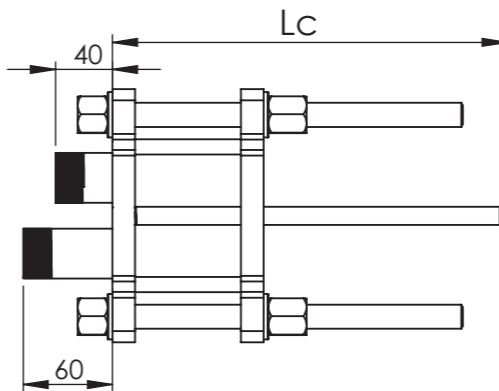
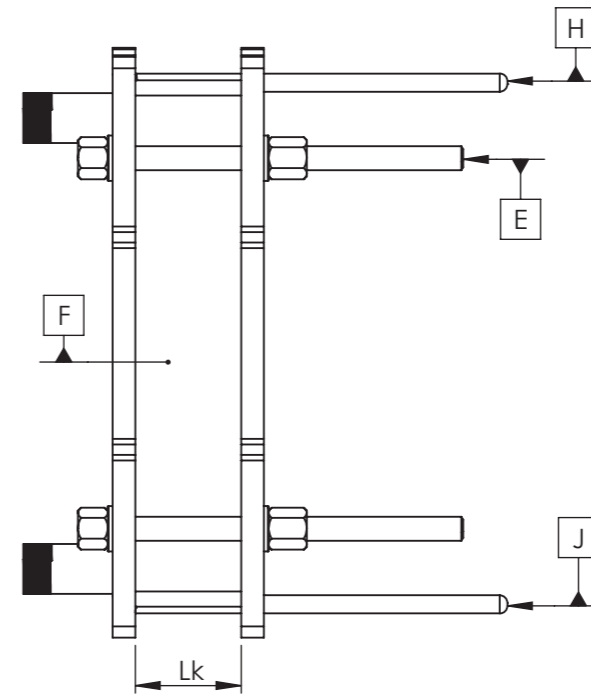
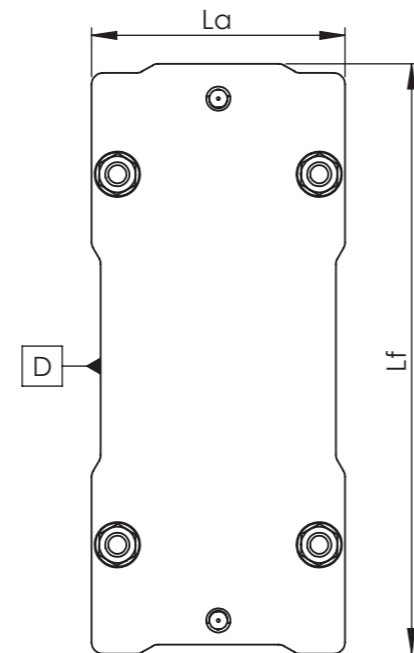
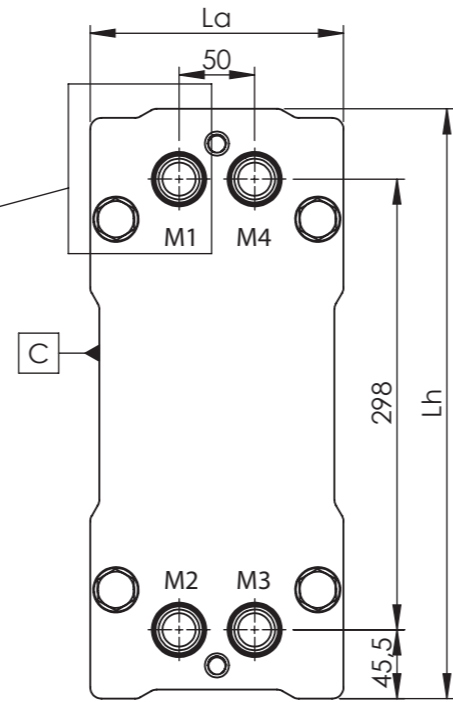
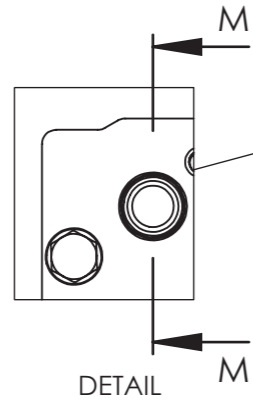


A 1" Threaded Connection
Galvanized Steel
Optionally Stainless Steel
and Polyethylene (PE)



SECTION M-M
SCALE 1:4



M1	Primary Inlet	1" NPT Outside Thread	
M2	Primary Outlet	1" NPT Outside Thread	
M3	Secondary Inlet	1" NPT Outside Thread	
M4	Secondary Outlet	1" NPT Outside Thread	
Design Pressure	La	Lh	Lf
10 Bar - 145 PSI	167,5 mm	390 mm	390 mm
16 Bar - 232 PSI	167,5 mm	390 mm	390 mm
25 Bar - 362 PSI	N/A	N/A	N/A
Lk	N*(2.35+X)	N: Number of plates X: Thickness of plate	
Lc	Number of Plate		
150 mm	0-25 pcs.		
200 mm	26-40 pcs.		
250 mm	41-65 pcs.		
N/A	N/A		
N/A	N/A		
N/A	N/A		
H - Guide Bar	Galvanized Steel - S235JR		
J - Carrying Bar	Galvanized Steel - S235JR		
G - Supporting Column	N/A		
F - MIT Plate	AISI 316L/Titanium/Hastelloy		
K - Fixing Foot	N/A		

Design Pressure	C - Head Plate		D - Follower Plate		E - Tightening Bolt	
	Thickness	Weight	Thickness	Weight	Size	PCS.
10 Bar - 145 PSI	15 mm	6,7 Kg	15 mm	7,2 Kg	M16	4
16 Bar - 232 PSI	20 mm	8,9 Kg	20 mm	9,5 Kg	M16	4
25 Bar - 362 PSI	N/A	N/A	N/A	N/A	N/A	N/A
Electrostatic application of powdered paint - S235JR/S355JR					Galvanized	

Model:	MIT-503	Draw. Name:	OOD- Inlet and outlet on the head plate	
Revision Text	Technical drawing revision	Design Standard :	EN 13445	
				A3
				Scale 1:5
				mm

EKIN ENDÜSTRİYEL
Isıtma-Soğutma San. Tic. Ltd. Şti.

Ekin Endüstriyel reserves the right to make changes on the product.
This document cannot be reproduced or distributed without the permission of Ekin Endüstriyel.

Do not measure on the technical drawing.
All dimensions are in mm unless otherwise stated.